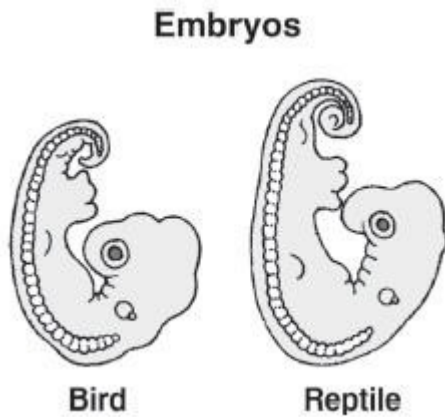


SC.912.L.15.1 – Evolution – Example 3 Answer

The diagram illustrates an embryonic stage of two organisms.



Which of the following can be determined by observing the embryos shown in the diagram?

- A. The organisms share a common ancestry.**
- B. The organisms belong to the same genus.**
- C. The organisms are native to the same geographic areas.**
- D. The organisms will grow into anatomically similar adults.**

Answer

- A. The organisms share a common ancestry.

During the embryonic stage, before organisms develop many specialized structures, embryos with common ancestry will tend to have many of the same characteristics.